



Directions for Rear Lifted Truck Bracket

Supplied Hardware: 14-Stainless Steel (SS) 1/4 x 20 x 1 bolts; 22- (SS) washers; 8-SS flange nuts; 6-(SS) Locking Nuts; 8-(SS) self tapping screws; 2-Lifted Truck Brackets;

2-Support Brackets with 4 additional bolts, nuts, and washers—for mudflaps 16" and longer.

NOTE: *As you progress with the install, check that the mudflap remains square and plumb to the tire.*

Step 1. PARK VEHICLE ON LEVEL GROUND.

Step 2: Un package your new brackets and mudflaps. Smooth side of mudflap is the rear side. If applicable, Stainless Steel weights face rearwards.

Step 3. Align the bracket against the fender well lip so that when you attach the mud flap and have it aligned with the outside edge of the bracket, the mud flap will be centered to your tires. This will leave extra mud flap hanging beyond the inside edge of the bracket. Once it is straight, attach the bracket to the fender well lip with a clamp. Once it is straight, mark the bracket with a pencil or chalk along the outside edge of the fender well as a reference point (this is helpful for alignment if you remove your tires for drilling).

It will be necessary to put a curve in the bracket to match the curve of the wheel well.

If your tires come out more than 2.5" beyond the fender well, the bracket may have to have a straight edge at the top for the return behind the fender well.

Step 4. Drill one hole through the bracket and wheel well lip at the upper outside corner. Drill a starter hole first with a 1/8" bit, then drill the final hole with a 1/4" bit. Attach the bracket with one bolt thru the washer, bracket and fender well, using the flange nut for attachment. Leave the bolt hand tight for now.

NOTE: You may use the self tapping screws instead of the bolts in areas not accessible for attaching the flange nuts.

Step 5. Place a level on the top edge of the bracket and adjust for horizontal plumb. If you are not on level ground, you may need to line up the bracket by sight.

Step 6. Drill a second hole in the bottom outside edge of the bracket and wheel well lip and secure it with a second washer, bolt and flange nut.

Note: You may also use factory holes already in the fender well lip, but you will need to line up the holes in your bracket to match.

Step 7. Install the 3rd and 4th bolts, evenly spaced between the top and bottom bolt and tighten all bolts.

Step 8. Clamp the mud flap to the bracket with the edge of the mud flap matching the outside edge of the bracket, and the grooves hanging vertically and facing the tires. The straight edge with the straight corners should be on top against the bracket and the radiused corners on the bottom.

Step 9: Using the bracket holes for a template, drill 3 1/4" holes thru the mudflap.

Step 10. Attach the mudflap to the bracket with the SS bolts, locking nuts and washers on both sides.

Note: Check all bolts every month and tighten if necessary.

IF YOU HAVE ANY QUESTIONS OR CONCERNS PLEASE GIVE US A CALL AT 541-245-9148

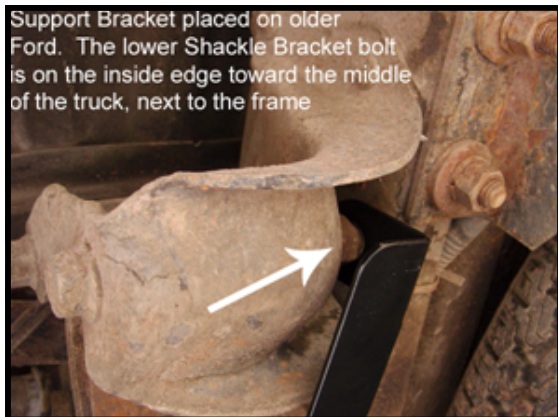
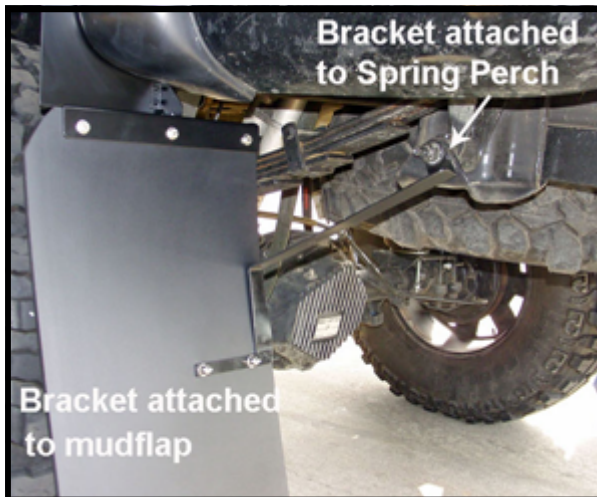


Support Bracket Installation required for rear mud flaps. This bracket is not required for shorter Mud flaps under 16" in length due to their lighter weight. Start with the passenger side to fit the bracket under the tailpipe. Then match the position on the drivers side.

- Step 1: Remove the nut from the bolt on the end of the **LOWER** Spring Perch.
- Step 2: Attach the shorter end of the bracket to that bolt, and replace the factory bolt. Leave slightly loose for adjustment.
- Step 3: Position the longer end of the bracket on the mudflap and use the bracket as a template to drill 3 - 1/4" holes in the mudflap.
You may need to bend the bracket to fit your specific application. Make sure the bracket is positioned on the mud flap so that it does not push your mud flap forward toward the tires or pull it back.
- Step 4: Attach the bracket to the mudflap with 1 bolt thru the washer, thru the front (side with grooves) side of the mudflap and out the back, secured with the flange nut.

Finally: Verify the mudflap alignment and **Tighten all bolts and or screws.**

Note: On rear mudflaps check for clearance of at least 3" between your tailpipe and the mudflap to prevent damage to the mudflap. It may be necessary to have your tailpipe repositioned by your local muffler shop.



NOTE: Recheck bolts and screws monthly and retighten if necessary.